

# AD

## THE SECRET GARDEN

\*Shalini Misra  
mows her lawn!

# CHARLES JENCKS LAST LANDSCAPE

A GROUNDBREAKING  
PRIVATE HOUSE IN DELHI

BATHROOMS  
THAT MAKE A  
*SPLASH!*



# WATER WORLDS

*The latest in bathroom trends from the world's  
greatest designers, and how to get the look*

STYLIST MITALEE MEHTA

## AXEL VERVOORDT

Atop the Greenwich Hotel, the TriBeCa Penthouse by Axel Vervoordt with architect Tatsuro Miki—and inputs from the hotel's owners, Robert De Niro and Ira Drukier—is a world apart from the bustling Manhattan it is set in. "The master bath is made with old stones from New York," says Vervoordt. The bath itself is crafted from a converted trough with patina created by time and use. In front is a 19th-century French montagnard pine stool.

PHOTO: LAZIZ HAMANI



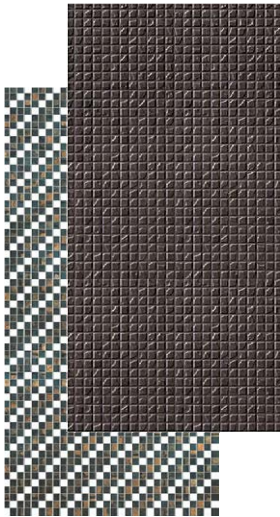
'BASALTO VENA CHIARA' PORCELAIN SLABS,  
STONELAM LAMINAM



'PENT' (GLOSSY BLACK) WASHBASIN,  
STERNHAGEN



'ADVANTIX' (737450 ) SHOWER CHANNEL,  
VIEGA



'PLAZA OXIDE DECOR' AND  
'MOSAIC SLATE DECOR' CERAMIC  
TILES, KAJARIA



'DEVONIAN BLACK' AND 'GRIGIO  
MONET SKY' GLAZED VITRIFIED  
TILES, NITCO



'RAINFINITY' HAND-SHOWER  
HANSGRÖHE



'ETNA' MIXER, ROCA



'FOREFRONT' (5373IN-HG1) BASIN, KOHLER



'MYEDITION' (SATIN BLACK)  
FAUCET, AXOR



'ZA SERIES' FAUCET, TOTO



'DUTCH PLUS' VANITY AND  
BASIN, KEROVIT BY KAJARIA



'F-LE FORME' WALL-MOUNTED  
WATER CLOSET, QUEO



'NIGHTLIFE' WALL-MOUNTED WATER CLOSET  
FROM THE ARTITUDE COLLECTION, PARRYWARE



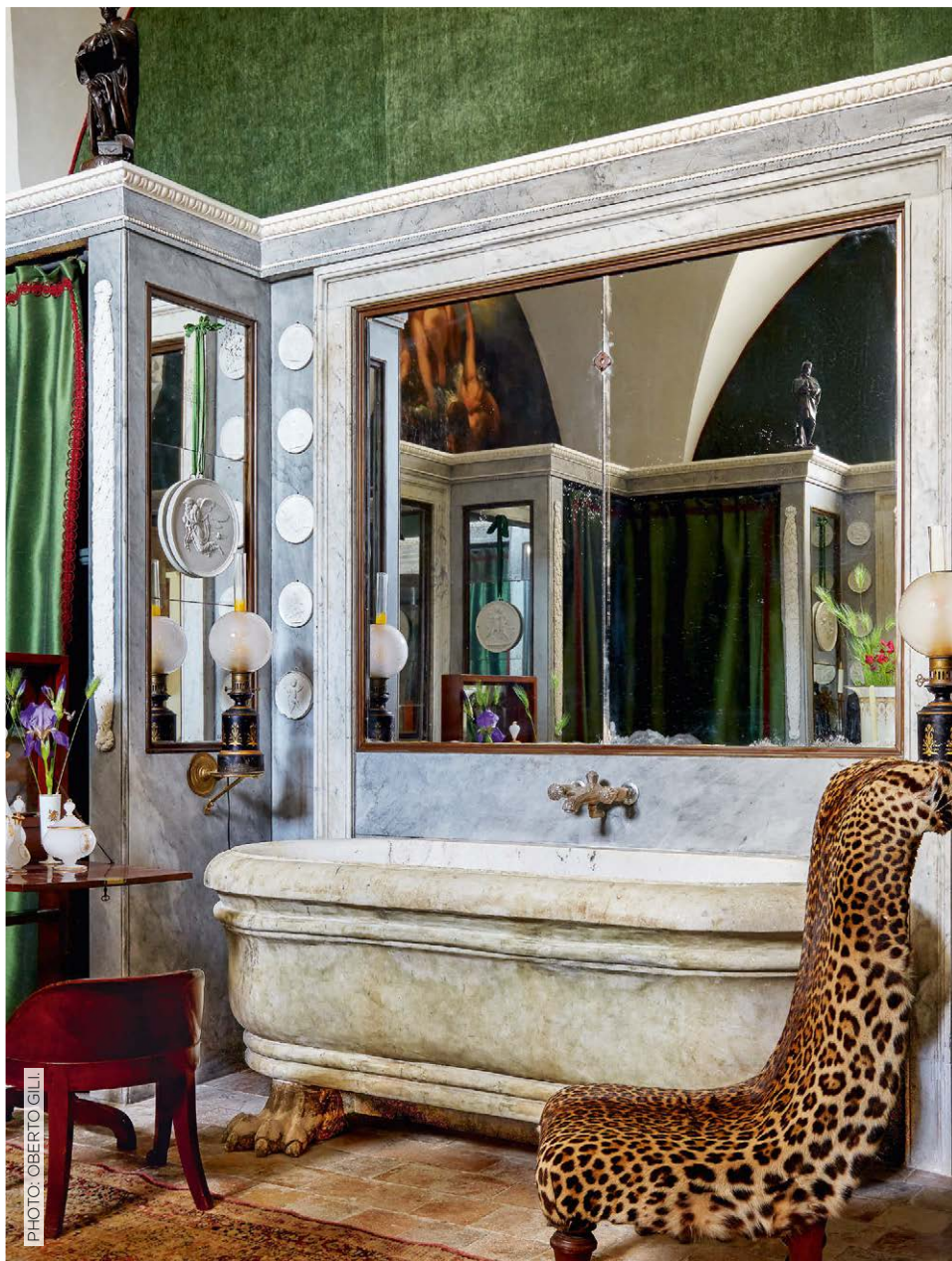


PHOTO: OBERTO GILL

## JACQUES GARCIA

Villa Elena, Jacques Garcia's palatial Sicily home has a storied past—a 17th-century monastery built on a 12th century Norman villa, which replaced a 10th century Moorish palace, built on a 5th-century Roman house, itself built on a 3rd-century Greek villa. Fittingly, the decorator, known for his glamorous hotel interiors, has accoutred the house in objects that reflect this provenance—scalloped silk canopies, and furniture made for 19th-century royals. A neoclassical marble tub anchors this bathroom.



'ORIGIN' FAUCET, VITRA



'ICE BLOCK' MARBLE BASIN, ARNAYA

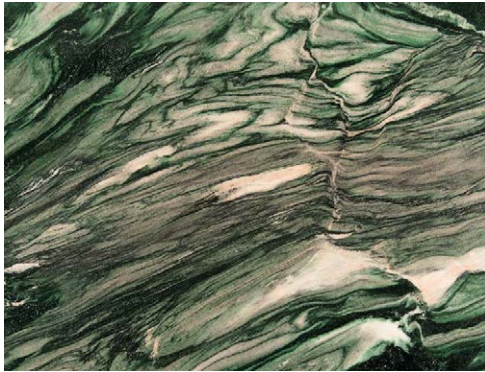


'REGINA' FREE-STANDING BATHTUB, DEVON & DEVON



'NUDE' MIXER BY ZUCCHETTI KOS, INTERSEKT





'PASSIONE' MARBLE FROM THE CELEBRITY COLLECTION,  
THE QUARRY GALLERY



'BOL' CERAMIC FAUCET WITH  
MARRAKESH PATTERN, KOHLER



MARBLE BASIN, ARNAYA



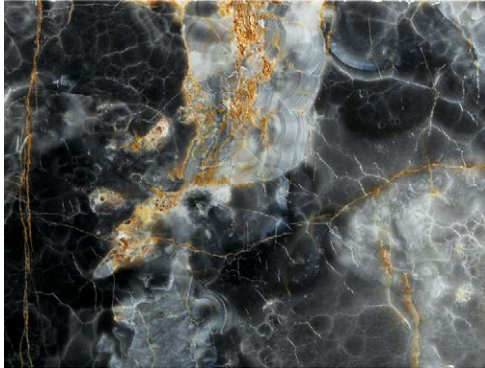
'CHAMPAGNE' ONYX FROM THE CELEBRITY COLLECTION,  
MARBLE CENTRE



'BOURGEOIS II'  
FLOOR MIXER  
BY MAISON  
VALENTINA,  
C BHOGILAL  
WEST-END



'ADRIANA'  
PORCELAIN BASIN,  
LONDON BASIN  
COMPANY



'BLUE POMFRET' ONYX FROM THE EXCLUSIVES RANGE,  
HMG STONES



'JASEN' TILES, CRAFT BETON



'BIANCO VERSAILLES' STONE, CLASSIC MARBLE  
COMPANY



GLAZED VITRIFIED TILES FROM THE DURALISM  
COLLECTION, SOMANY CERAMICS



'UNO' TAP BY AXOR, FREESTANDING  
SINK FROM THE TOMMY METROPOLE  
COLLECTION, INTERSEKT

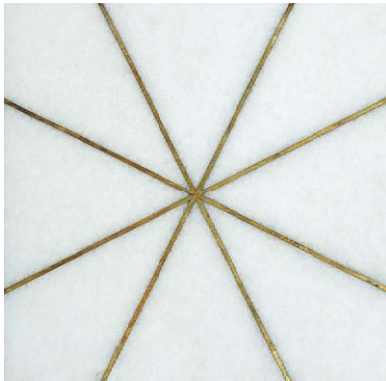




'SWIRL' TILE BY **TOPSTONA, C BHOGILAL WEST END**



'PINK ONYX' FROM THE OPERA COLLECTION, **A-CLASS MARBLE**



'INTERSECT' TILE FROM THE LUSO COLLECTION, **TOPSTONA**



TILE FROM THE MARMO COLLECTION , **PIETRA 1556**



'H2OKINETIC' PENDANT RAIN-CAN SHOWER HEAD WITH LED LIGHTS, **DELTA FAUCETS**



'ARC' BASIN MIXER, **JAQUAR**



'RAINDANCE S' OVERHEAD SHOWER, **HANSGROHE**



'DUTCHMASTER BLUSH FLORAL CARILLON' (K-30333-DM1-O) SINK, **KOHLER**



'CORUS' BASIN, **CERA**



'HALO' (DUSTY PINK) BASIN, **CONCRETE NATION**



'RIO' BASIN BY **DADO, HÄFELE**



'F-AUTOMODE' ELECTRONIC WATER CLOSET, **QUEO**



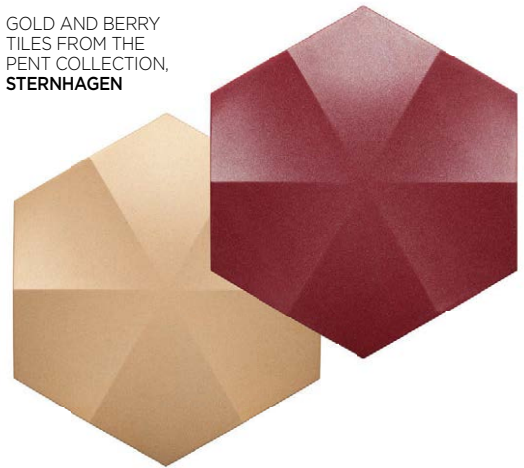
'MYSTICAL HAVEN' WALL-MOUNTED EUROPEAN WATER CLOSET, **ALCHYMI**





'ANTHEUS' FREE-STANDING  
BATHTUB, **VILLEROY & BOCH**

GOLD AND BERRY  
TILES FROM THE  
PENT COLLECTION,  
**STERNHAGEN**



'METROPOL CLASSIC'  
FREE-STANDING  
BATHTUB FILLER,  
**HANSGRÖHE**



'ANTHEUS' OVAL  
MIRROR AND SHELF IN  
AMERICAN WALNUT,  
**VILLEROY & BOCH**

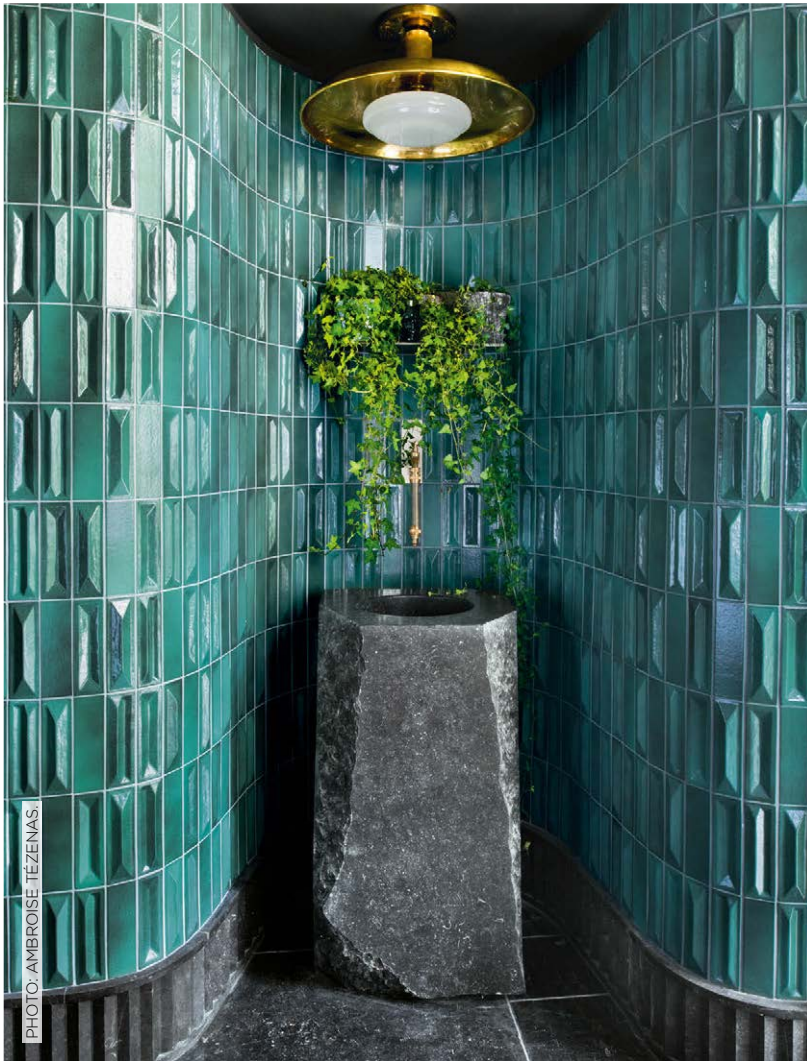


PHOTO: DOUGLAS FRIEDMAN

## HANNAH CECIL GURNEY

Colours and patterns abound in the London home of Hannah Cecil Gurney—as is expected from a scion of de Gournay, maker of some of the world's best wallpaper. In the maximalist master bath, terrazzo flooring is paired with a de Gournay wallcovering on sterling-silver gilded paper. The tub is Ilbagnolalessi, with a Catchpole & Rye tub filler. Gurney chose a pink flamingo paper for the space, adding an ombré yellow effect to the top.





## CHARLES ZANA

Julie de Libran, creative director of Sonia Rykiel, decorated her home—in a Paris building with a courtyard—with the help of French architect Charles Zana. Having lived for a while in Southern California, de Libran wanted her home to reflect the flora that she had come to love. Spots of green dot the apartment, which is decorated with a mix of pieces from de Libran's collection and Zana's designs. A pendant from Roman and Williams Guild hangs above a planter and a stone sink in the entrance hall, where de Libran often arranges flowers. The tiles are vintage Gio Ponti designs.



'BROADWAY COMPACT' SPA,  
ROCA



'PLOUF BLUEBERRY' BATHTUB FROM THE MAHDAVI  
COLLECTION, BISAZZA, FCML BATHROOMS



'CALMOR' CERAMIC TILE  
FROM THE GLOSSTRA XL  
SERIES, SOMANY CERAMICS



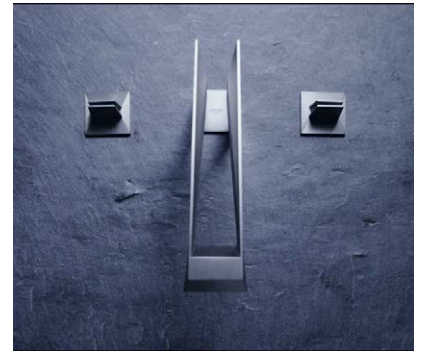




'LUV' BATHROOM FURNITURE FROM THE NORDIC ELEGANCE DESIGN SERIES, **DURAVIT**



'TIAARA' BASIN MIXER, **ARTIZE**



3D FAUCET, **GROHE**



'D.I' FAUCET, **DURAVIT**



'COSMIC' WALL-MOUNTED EUROPEAN WATER CLOSET (S1044142), **CERA**



'COMPOSED' (K-73159T-7-RGD) FAUCET, **KOHLER**



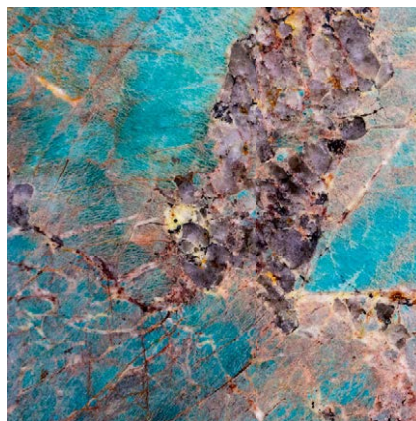
'FLOTATION' BATHTUB, **TOTO**



'TAO' MARBLE SINK BY **KREOO**, **C BHOGILAL WEST-END**



'NAMISEN' TILE FROM **BHARAT FLOORINGS & TILES**



'AMAZONITE' TILE FROM THE EXOTICA COLLECTION, **A-CLASS MARBLE**



'H2OKINETIC' RAIN SHOWERHEAD (RP707171-PN), **DELTA FAUCETS**

Assisted by Samir Wadekar.  
For details, see Stockists.